

Safe Routes to School Guttenberg

Daphnee Boulin
Justin Jorgensen
Adweta Joshi
Jielin Sun

What is the Safe Routes to School Program?

Program that encourages children to walk and bike to school



The Plan

- Encourage walking and biking through the 5E strategy
 - Education
 - Encouragement
 - Enforcement
 - Engineering
 - Evaluation

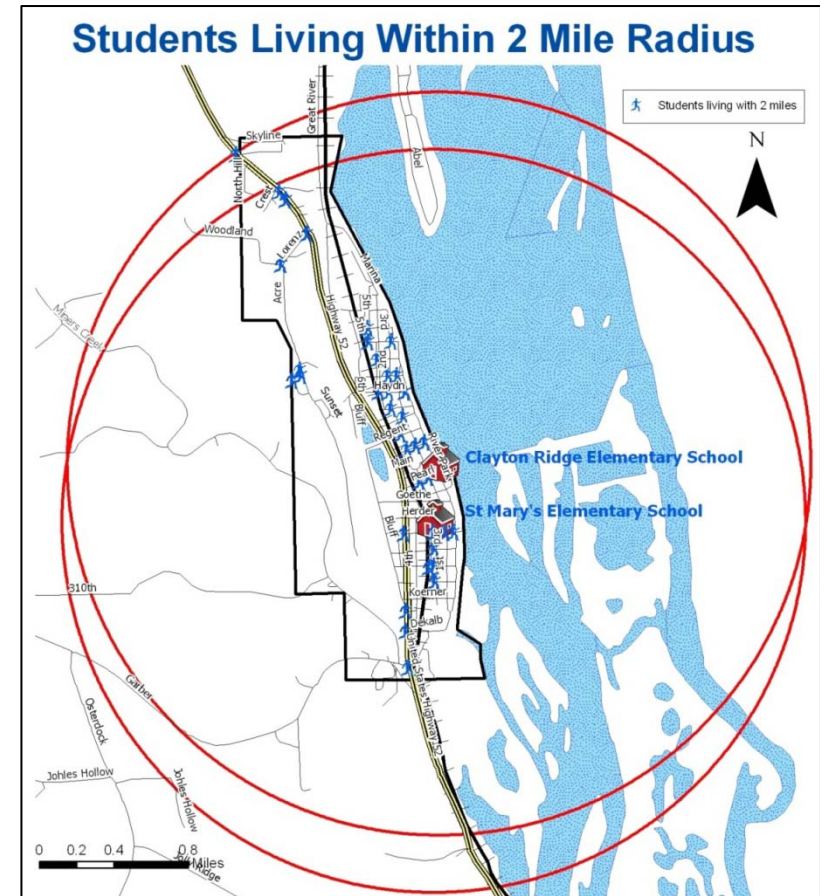
Education: Barriers

- Distance
- Traffic speed along route to school
- Weather
- Safety at intersections and crossings (RR and Hwy 52)



Education: Solution

- Pedestrian and bicycle safety in education curriculum
- Use school newsletter to convey information about :
 - SRTS
 - benefits of walking and biking
 - distance perception vs. reality



Encouragement: Barriers

- Parents lack of information on school's walking and biking policies (about 80% of respondents)
- Student households living close to school do not walk to school

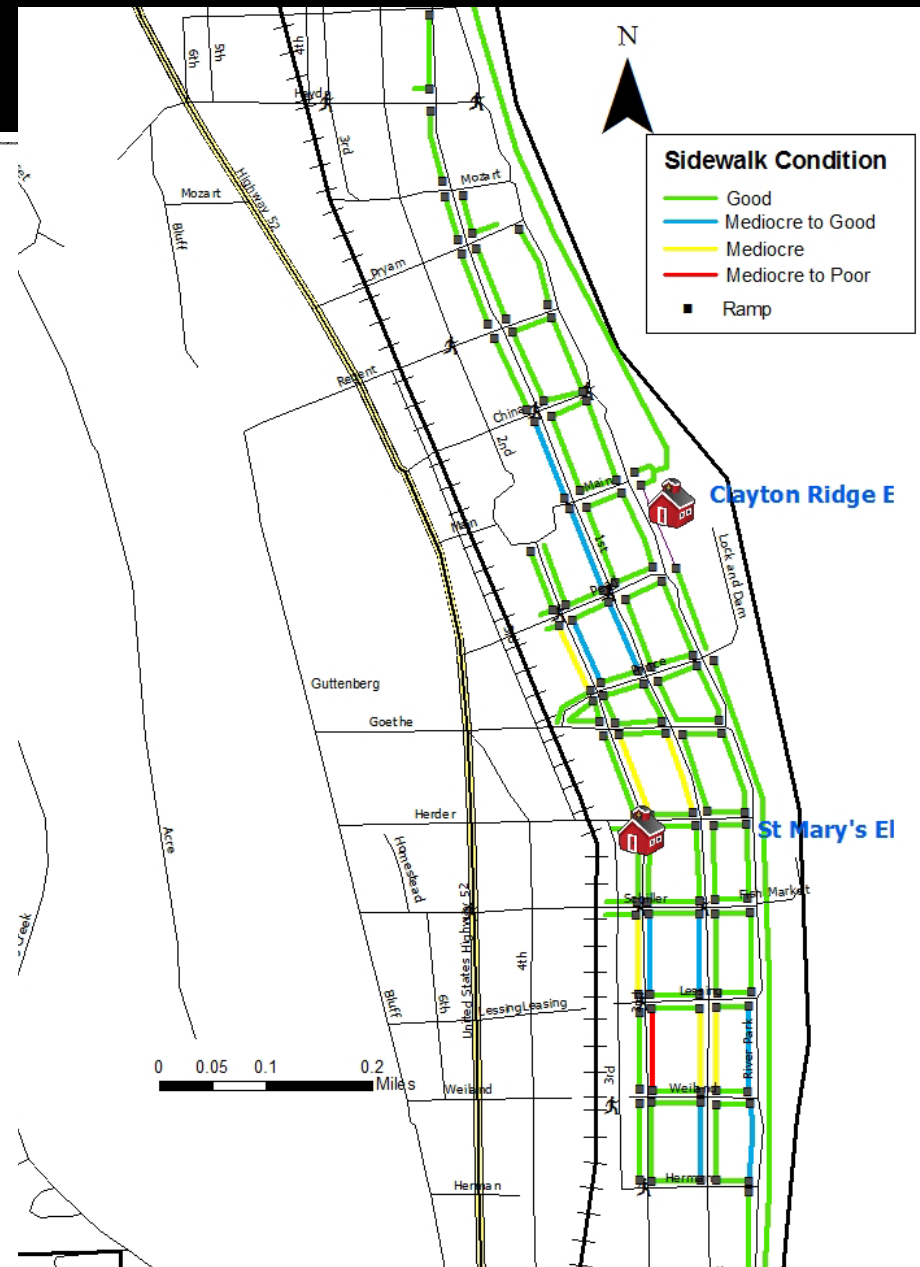
Encouragement: Solution

- Form committee and identify volunteers to structure and implement SRTS
- Supervised Walking school bus from St Mary to Clayton Ridge and another from the Clayton ridge to the day care
- Provide students incentives: punch card, rewards
- Events: Participate on the international walk to school day in October
- Use Iowa Bicycle and pedestrian encouragement guide to brainstorm other strategies applicable to Guttenberg



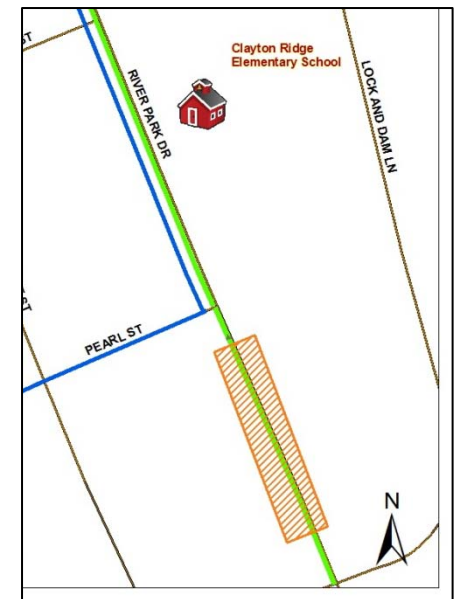
Engineering: Barriers

- Highway 52
- Railroad Crossing
- Lack of Infrastructure
- Incomplete sidewalk system
- Unmaintained walking trail down the bluff
- Crosswalks less visible



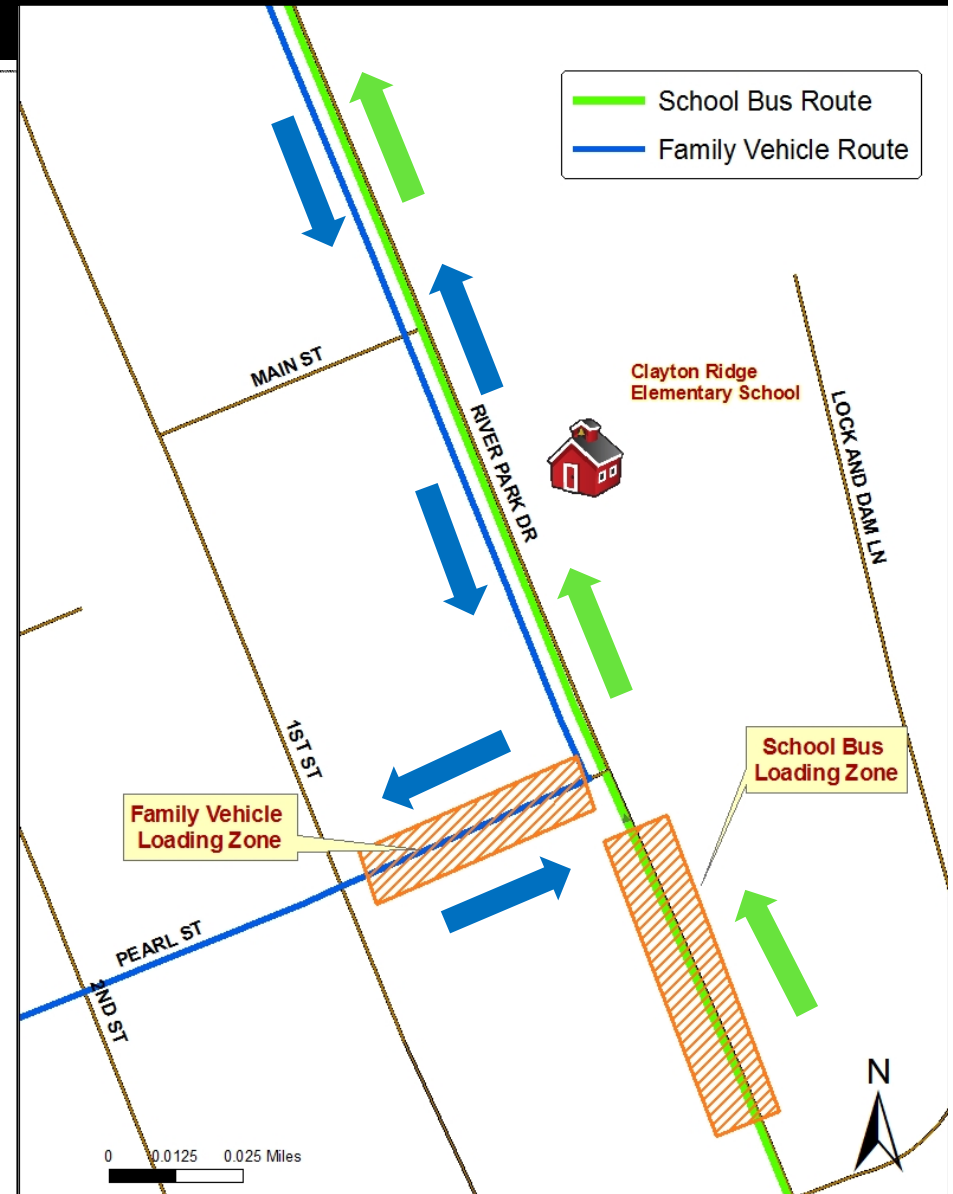
Engineering: Barriers

- St. Mary's students dropped off by bus to Clayton Ridge to be picked up by another bus
- Morning conflicting traffic with bus unloading and family vehicle unloading
- Blind spots due to on-street parking at corners



Engineering: No-cost Solution

- Normal bus route
- Parents loading/unloading zone along Pearl Street
- Utilize on-street parking



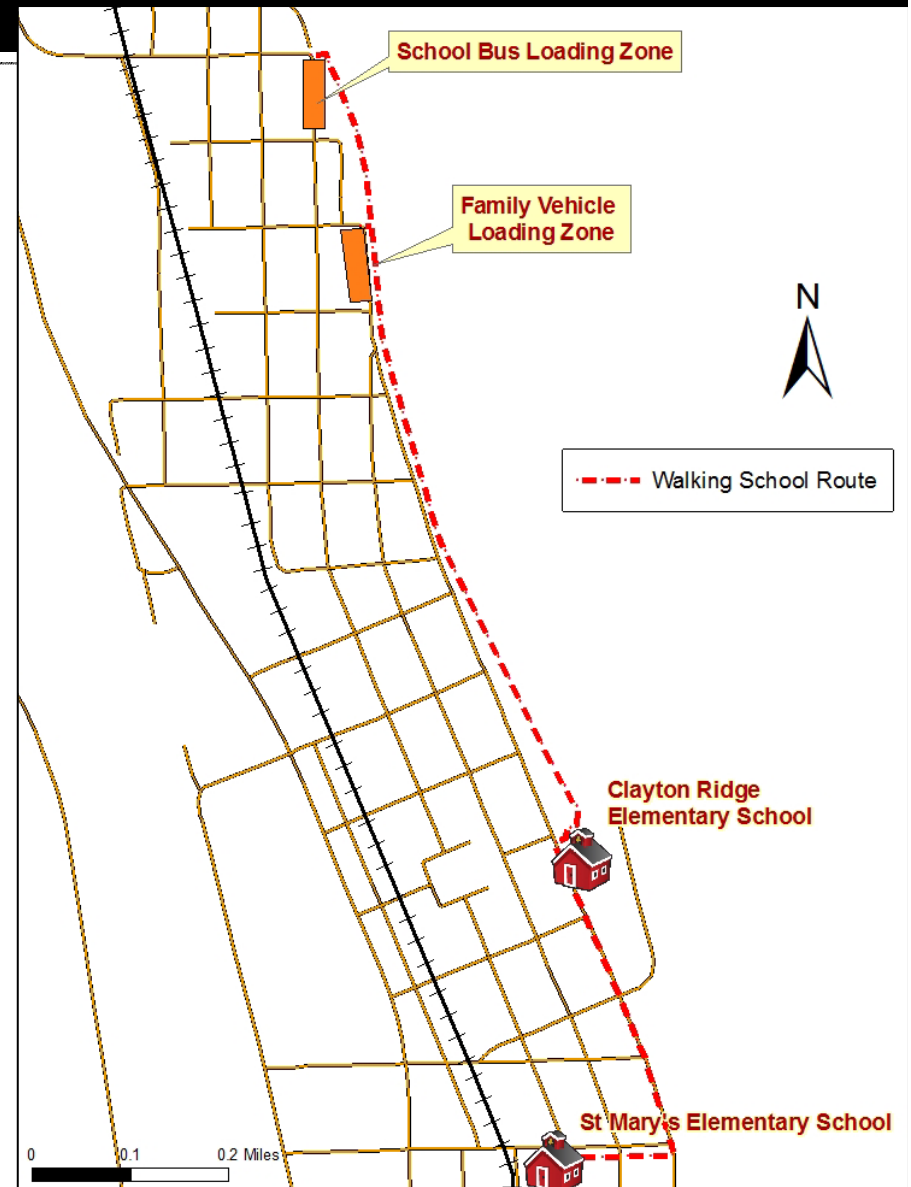
Engineering: No-cost Solutions

- Close off intersection between River Park Drive and Pearl
- Traffic controlled by crossing guards/ police
- Add crosswalk
- Restrict parking at corners to avoid blind spots



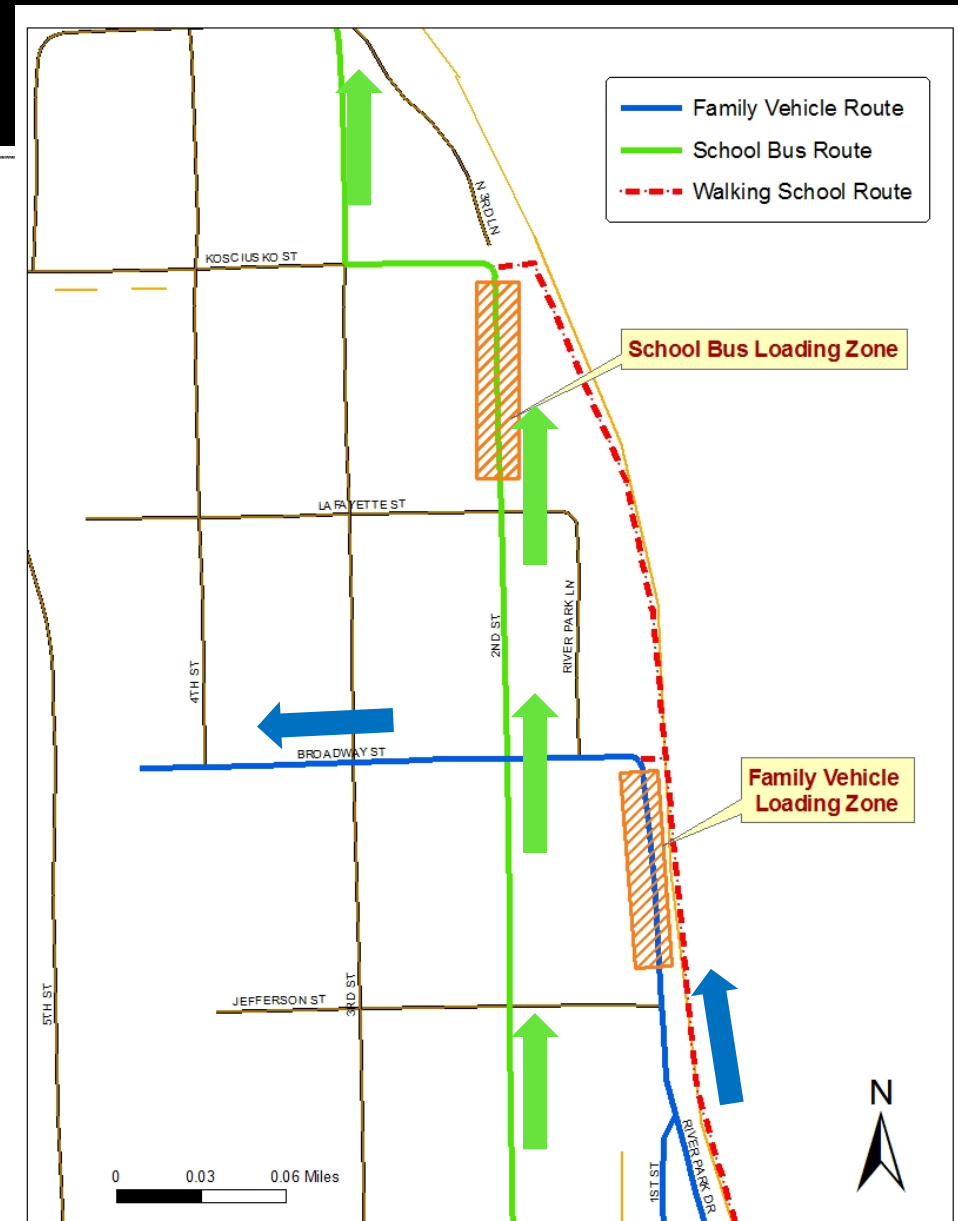
Engineering: Low-cost Solution

- Walking School Route
 - Parents and Bus Loading/Unloading Zone
 - Connect to both schools
 - 0.8 -1 mile walk



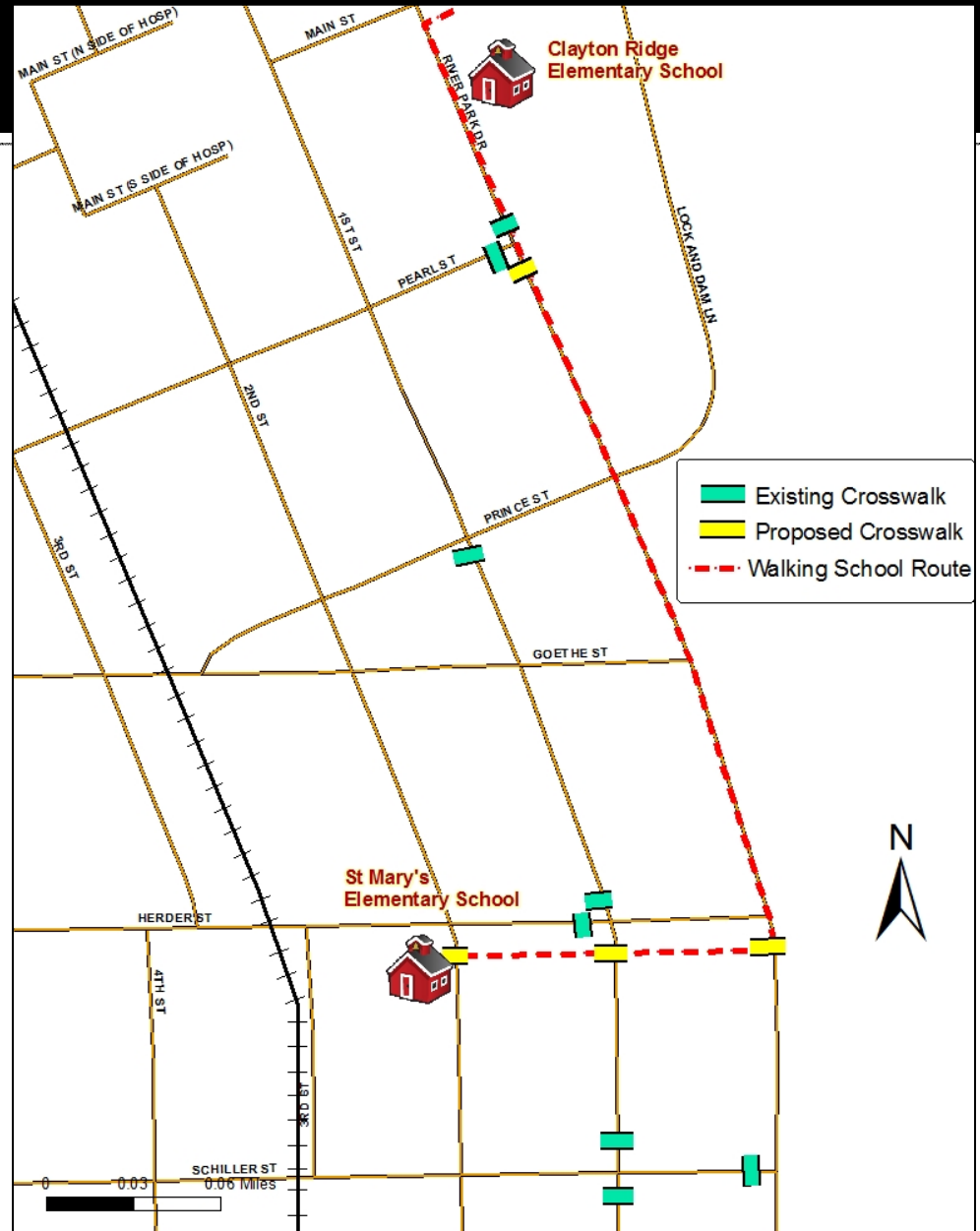
Engineering: Low-cost Solution

- Crossing Guards
- Connecting Trails
- Bus Loading Zone Sign



Engineering: Low-cost Solution

- Repaint existing crosswalks
- New crosswalks
 - Cost: \$100 per crosswalk
- Advanced warning signs and crosswalk signs



Engineering: Medium-cost Solution

- Maintain walking trails down the bluff
- Add more railway crossing signals with flashers (3 proposed for Fall)
- Place crosswalk on highway 52
 - Cost:\$300- \$3,000



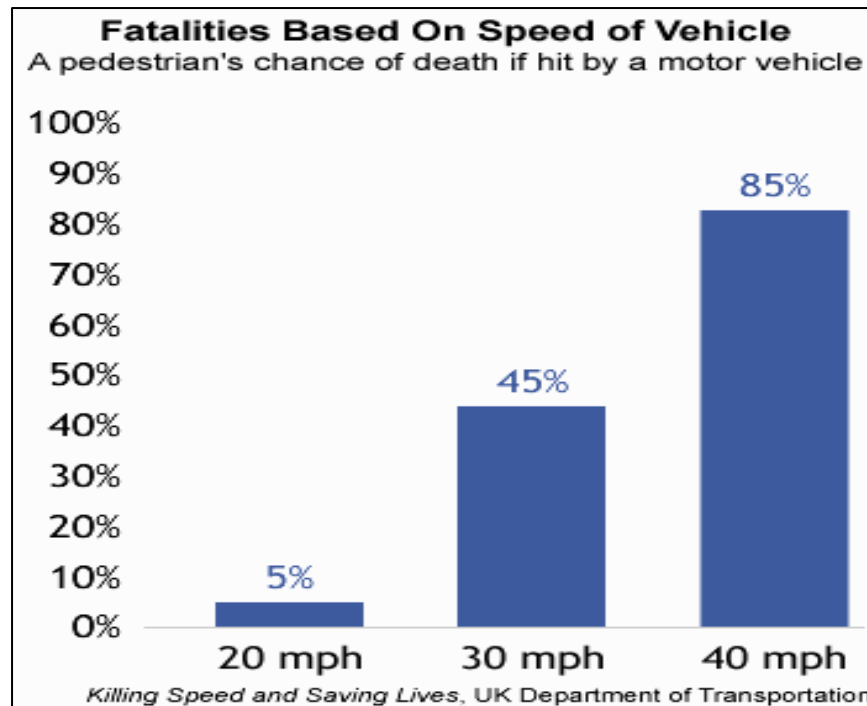
Engineering: Future Solution

- Upgrade mediocre and poor sidewalks
- Complete sidewalk system
 - Ramps and warning panels
- Supporting infrastructure: Speed Reduction zone, pedestrian signals
 - Cost: \$20,000 - \$140,000



Enforcement: Barriers

- No visible law enforcement in morning.
- High Traffic Speeds on Hwy 52.



Enforcement: Barrier



Enforcement: Solution



Enforcement: Solution

- School Safety Zone
 - Zone should cover the entire school grounds and related areas that have school generated traffic
 - Loading and unloading zones should be clearly marked
 - Hazards identified and eliminated
 - Parents and children given frequent verbal and written reminders about the rules and procedures

Enforcement: Solution

- Pedestrian Sting Operations
 - Police officers pose as pedestrians
 - Quickly identifies offenders
 - Requires police resources
 - Progressive ticketing



Enforcement: Solution

- Safety Patrols
 - Students assist with student arrival and departure at school
- Advantages
 - Provides needed help
 - Builds student role models
- Considerations
 - Requires adult coordinator
 - Liability issues need to be discussed



Past school safety patrol officers include Presidents Bill Clinton and Jimmy Carter

Enforcement: Solution

- Speed Trailers
 - Portable trailer that displays drivers' speeds
- Advantages
 - Does not require officer to be present
 - Provides immediate feedback
 - Relatively low cost
 - Can be moved to varying locations
- Considerations
 - Not a substitute for permanent action



Enforcement: Solution

- Neighborhood Speed Watch Programs
 - Citizens play an active role
 - Use of radar guns by residents
 - License plate number and speed recorded
 - Letters sent to violators
 - Requires volunteers and training
- Escort Programs
 - "Corner Captains"
 - Walking School Buses
 - Biking Trains
 - Crossing Guards



Evaluation

- Establish a SRTS Committee
- Performance Measures
 - Behavioral Survey
 - Infrastructure maintenance program