

TROUT STREAMS OF WINNESHIEK COUNTY

FISHING GUIDE



AN ANGLER'S COMPANION TO THE PUBLIC STREAMS & RIVERS OF WINNESHIEK COUNTY

NORTHEAST IOWA'S HOTTEST HATCHES

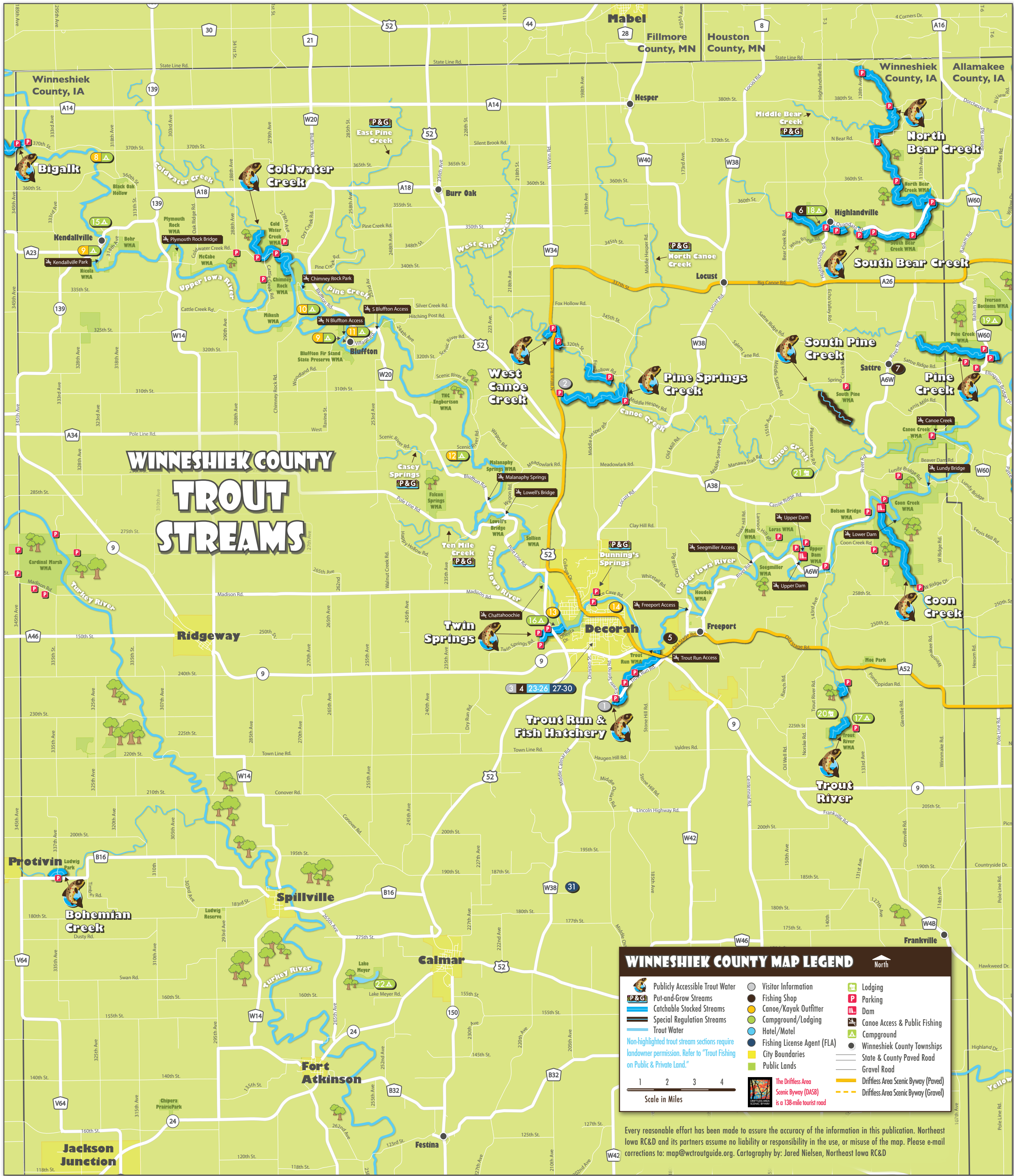
Below is a month-by-month breakdown of the best hatches found in Northeast Iowa along with recommended dry and wet flies for each.

Insect hatches Prime time for fishing each insect

HATCH	J	F	M	A	M	J	J	A	S	O	N	D	FLIES
Baetis				■	■	■	■	■	■	■	■	■	Blue Winged Olive #16-22
Caddis				■	■	■	■	■	■	■	■	■	Elk Hair Caddis #14-20
Hendrickson			■	■	■	■	■	■	■	■	■	■	Adams & Dark Hendrickson #12
Hexagenia					■	■	■	■	■	■	■	■	Adams & Brown Drake #10-12
Midges	■	■	■	■	■	■	■	■	■	■	■	■	Griffiths Gnat & Brassie #16-22
Scuds	■	■	■	■	■	■	■	■	■	■	■	■	Olive, Gray or Tan Scud #12-16
Stoneflies	■	■	■	■	■	■	■	■	■	■	■	■	Beadhead Prince Nymph #10-16
Sulphurs				■	■	■	■	■	■	■	■	■	March Brown & Gray Fox #14-16
Terrestrials						■	■	■	■	■	■	■	Hoppers & Crickets #10-12
Trico					■	■	■	■	■	■	■	■	White Wing Black Trico #22
Other	■	■	■	■	■	■	■	■	■	■	■	■	Muddler Minnow & Woollybugger #4-10

IOWA'S FISHING REGULATIONS

- Below are guidelines that will be helpful when you fish Iowa. However, it is not a complete list of all fishing regulations and always be sure laws haven't changed. For more information, visit www.iowadnr.gov or contact the DNR Central Office in Des Moines at 515-725-8200.
- STREAM CLASSIFICATION.** Before you plan your trip, it is important to understand how trout waters are classified in Winneshiek County. The trout management in Iowa divides trout fisheries into the three categories listed below. Please read each definition to gain an understanding of which stream segments contain catchable trout, are open to the public or require permission from property owners.
 - CATCHABLE STOCKED STREAMS** are open to the public and stocked regularly with catchable-sized trout that measure 10 to 12 inches in length and weigh about one-half pounds.
 - PUT-AND-GROW STREAMS** require landowner permission to fish and are stocked with fingerlings, or young trout that measure about 10-15 cm. These streams produce "stream-raised" trout rather than ones grown to catchable-size in rearing stations and are only stocked once a year.
 - SPECIAL REGULATION (SR) STREAMS** are open to the public and can only be fished using artificial lures. SR Streams in Winneshiek County include South Pine Creek, which has a catch-and-release regulation for all trout.
 - IOWA'S TROUT SEASON.** Iowa's trout season differs from Minnesota, Wisconsin & Illinois in that the state offers continuous year-round fishing for brook, brown and rainbow trout.
 - DAILY BAG LIMIT** The daily bag limit for trout is five and the possession limit is 10.
 - FISHING LICENSES & TROUT STAMPS.** Anglers who fish for trout are required to pay the trout fee in addition to an Iowa fishing license. Both expire each year in January. However, children under 16 years of age may fish for free and possess trout if they fish with a licensed adult who has paid the current trout fee and they limit their combined catch to the day limit of five trout. If young anglers want to fish for and keep their own limit of trout, they only need to purchase the trout fee.



WELCOME TO IOWA'S TROUT COUNTRY



There are 19 spring-fed creeks in Winneshiek County that comprise over 32 miles of fishable water, four of the states 10 most-visited trout streams and one of only three trout rearing stations in Iowa. Located in the heart of Iowa's trout region, Winneshiek County's tranquil landscape attracts more trout anglers than any other county in the state. Anglers are attracted to this area for its high concentration of prime trout waters, fish counts, trout stocking plans and year-round opportunities to catch brook, brown and rainbow trout. Iowa DNR efforts have also contributed to making this region of the state a world-class trout fishery. On average, the Iowa DNR stocks approximately 76,000 catchable trout into catchable stocked streams within Winneshiek County from April 1 - October 31. Of the stocked catchable trout, approximately 75 percent are rainbows and 25 percent are brooks. The Iowa DNR also stocks over 30,000 fingerlings in both put-and-grow streams and streams with public-owned access. Public streams stocked with fingerlings in Winneshiek County include Bohemian, Coon, Dunning's Spring, Pine, South Bear and Trout Run. Of the stocked fingerlings, 98 percent are browns with the remainder comprised of brooks. In addition, excess brood trout, or adult trout that typically measure between 14 and 24 inches in length and weigh anywhere from two to eight pounds, are released into streams each year. For more information about Iowa's stocking season, including a list of the streams that are scheduled for stocking, call the Decorah Fish Hatchery at 563-382-8324, stocking hotline at 563-927-5736 or visit the DNR website at www.iowadnr.gov.

TROUT FISHING PLACES OF INTEREST

- DECORAH FISH HATCHERY. Rearing station along Trout Run and home of the "Decorah Eagles." FLA. 563-382-8324. 2321 Siewers Spring Rd, Decorah
- SEED SAVERS EXCHANGE. Visitor center, 8 miles of hiking trail, and a restored section of Pine Springs Creek. 563-382-5990. 3094 North Winn Rd, Decorah
- COUNTY VISITORS CENTER. Help desk with information about events, lodging, restaurants and fun things to do. 563-382-2023. 507 W Water St, Decorah
- DECORAH CHICK HATCHERY. Fly fishing equipment, supplies, flies and outdoor wear. 563-382-4103. 406 W Water St, Decorah
- WALMART SUPERCENTER. Fishing bait, gear, apparel, equipment, licenses & trout stamps. FLA. 563-382-8737. 1798 Old Stage Rd, Decorah
- HIGHLANDVILLE GENERAL STORE. Groceries, fishing tackle, license, trout stamps & bait. FLA. 563-546-7722. 3497 Highlandville Rd, Highlandville
- SATTRE GENERAL STORE. Variety of groceries, antiques & fishing tackle. 563-546-7910. 3162 River Rd Decorah
- HARVEST FARM CAMPGROUND. 60 campsites and general store near Bigalk Creek. 563-883-8562. 3690 318th Ave, Cresco
- Hruska's Canoe Livery & Campground. Offer canoe, kayak & tube rental on Upper Iowa River. 563-547-4566. 3233 347th St, Kendallville
- CHIMNEY ROCK CAMPGROUND. Offer canoe, kayak & tube rental on Upper Iowa River. 877-787-2267. 3312 Chimney Rock Rd, Cresco
- RANDY'S BLUFFTON STORE & CAMPGROUND. Offer canoe, kayak & tube rental on Upper Iowa River. 563-735-5738. 2619 W Ravine Rd, Decorah
- HUTCHINSON FAMILY FARM & CAMPGROUND. Offer canoe, kayak & cabin rental on Upper Iowa River. 563-382-3054. 2299 Scenic River Rd, Decorah
- OFF THE DRIFTLess. Tube, canoe & kayak rental with shuttle service. Open Thur-Sun 10am-4pm/Mon-Wed by reservation. 563-382-4641. 212 Pulpit Rock Rd, Decorah
- DECORAH RIVER TUBES. High quality inner-tubes \$8 each (includes shuttle). 563-379-8823. 701 Winneshiek Ave, Decorah
- KENDALLVILLE CAMPGROUND. 38 campsites located near Upper Iowa River. 563-547-2897. Highway 139 between Cresco, IA & Harmony, MN
- PULPIT ROCK CAMPGROUND. 150 campsites next to Twin Springs stream. FLA. 563-382-9941. 505 Pulpit Rock Road, Decorah
- SAMPSON SPRINGS CAMPGROUND. Campsites within walking distance from Trout River. 563-382-4849. 2271 133rd Ave, Decorah
- BEAR CREEK CABINS & CAMPGROUND. 20 campsites & 8 cabins along South Bear Creek. 563-546-7722. 3497 Highlandville Rd, Highlandville
- PINE CREEK CABINS & CAMPGROUND. Located minutes from the Upper Iowa River and several trout streams 563-380-6962. Old Spruce Dr, Decorah
- TROUT RIVER LOG CABIN. 19th century Norwegian-built log house a few feet from Trout River. 563-419-5634. 2336 Trout River Rd, Decorah
- CANOE CREEK LODGE. Cabin offering guide services & private access to Coon Creek. 563-382-1380. 2881 Pleasant View Rd, Decorah
- LAKE MEYER CAMPGROUND. 35 campsites located near Nature Center & 38-acre lake. 563-534-7145. 2546 Lake Meyer Road, Fort Atkinson
- COUNTRY INN & SUITES. 50 room hotel near Trout Run & Twin Springs. 563-382-9646. 1202 Iowa 9, Decorah
- QUALITY INN & SUITES. 58 room hotel & restaurant near Trout Run & Twin Springs. 563-382-2269. 705 Commerce Drive, Decorah
- HOTEL WINNESHIEK Turn-of-the-century historic 34 room hotel and restaurant. 800-998-4164. 104 E Water St, Decorah
- SUPER 8 MOTEL. 60 room hotel near Trout Run & Twin Springs. 563-382-8771. 810 Iowa 9, Decorah
- DECORAH MART. Convenience store that sells fishing licenses and trout stamps. FLA. 563-382-3327. 303 College Dr, Decorah
- WINNESHIEK TRUE VALUE. Hardware store that sells fishing licenses and trout stamps. FLA. 563-382-8822. 915 Short St, Decorah
- ACE HARDWARE. Hardware store with fishing tackle, equipment, fishing licenses and trout stamps. FLA. 563-382-3538. 200 E Main St, Decorah
- ANTHEM ARCHERY. Extensive range of archery equipment & indoor shooting range. FLA. 563-382-4755. 1718 Moellers Dr., Suite 8, Decorah
- CHASE THE ADVENTURE. Full service connection to clays shooting & pheasant hunting. 563-532-9821. 1838 Middle Calmar Rd, Decorah

TROUT FISHING ON PUBLIC & PRIVATE LAND



Trout Stile Leading to South Bear Creek

Anglers may fish in waters found on public land such as Iowa State Forests, Parks & Wildlife Management Areas. The IA DNR also buys private land from willing landowners, increasing fishing opportunities on publicly-owned land. However, in the Driftless region, many of the trout streams flow through private land. Furthermore, in Iowa, the landowner also owns the streambed. On private property, two systems allow the opportunity for public fishing.

- **THE 'HANDSHAKE AGREEMENT'** is simply a verbal agreement between the landowner and the state, allowing public fishing. On private property where a verbal agreement is in place, one will frequently see white signs which read, 'Private Property. Public Fishing Only'. Stiles, allowing one to easily cross a fence, may also be present. However, the owner ultimately decides if these indicators to public fishing are allowed on the property.
- The second system is the **ANGLER CONSERVATION EASEMENT** that allows public fishing, fish stocking by the DNR, and habitat improvement on the stream. The easement consists of a corridor of 75' on both sides of the centerline of the stream; therefore, the corridor moves as the stream changes direction. This allows continual access to the stream. On private property where an easement is present, DNR staff will be posting new, grey signs reading, 'Open for Public Fishing, Stream Easement Area'.
- **IF IN DOUBT**, and neither sign is present, stay out or ask the landowner. There are plenty of fishing opportunities in the region.

6. TROUT RIVER



LENGTH & TROUT: 3.0 mile stream with brook, brown & rainbow trout
DESCRIPTION: Out of all the trout streams in Iowa, there is only a handful as beautiful as the upper reaches of Trout River. Here, scores of mature brook and rainbow trout can be seen feeding at all levels of the water column. You might even be so lucky as to land a wild brown trout, as they have begun to reproduce here naturally. Known as a coldwater pasture stream, Trout River has two segments open for public fishing. The northern half-mile section of stream is private but can be accessed by a five minute walk from Trout River Log Cabin or parking access along 133rd Ave. The landowner has cooperated with several agencies, resulting in extensive habitat improvements that include embedding native prairie lands, bank stabilization and tree planting. The southern segment of stream is located on the 171-acre Trout River Wildlife Management Area and can be accessed across the road from Sampson Springs Campground. Please note that the stream segment highlighted in yellow above is on private land and does NOT allow public fishing. This unfishable segment is marked by signs and barbed wire running across the stream.

10. COON CREEK



LENGTH & TROUT: 2.6 mile stream with brown & rainbow trout
DESCRIPTION: Coon Creek is located in a large and remote 1,000+ acre Coon Creek Wildlife Management Area and offers anglers a largely untouched and rarely visited spot to explore. This stream winds through a thickly forested, varying countryside that features a lush riparian corridor, a canopy of aspen stands and wide open meadows. If you've never fished here before, wear waders. We recommend that you walk downstream as far as you would like to go and then work your way back upstream in the water. Most of the stream is blanketed with foliage, which makes back casting difficult and spin fishing the preferred angling method for catching trout.

1. BIGALK CREEK



LENGTH & TROUT: 0.6 mile stream with brook & rainbow trout
DESCRIPTION: This little stretch of water (pronounced (bee-yalk) would make an interesting side trip from Coldwater Creek. Bigalk is a spring-fed, cold-water creek that is one of only three streams in Iowa with inconsistent natural reproduction of rainbow trout. The landowner has cooperated with several agencies and extensive habitat improvements were made between 1995-1999 and again in 2013, which included reshaping the stream bank, installing rock riprap, constructing fish hides and reseeded the bank. Today, this stream measures three to seven feet across and flows in a rough west to east direction before joining the Upper Iowa River near the truss bridge with parking access. Although the stream begins as a three-foot wide trickle from the Upper Iowa River to the intersection of 370th Street and 345th Street, the waterway does widen as you enter the Bigalk Wildlife Management Area and head west parallel to 30th Street and into the Bigalk Trout Stream Wildlife Area that is lined by palisade limestone bluffs. Nearby lodging options include Harvest Farm Campground.

7. PINE CREEK



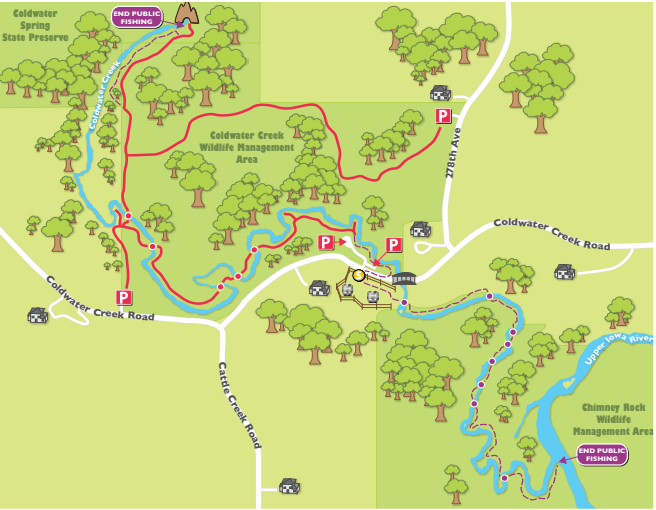
LENGTH & TROUT: 2.5 mile stream with brook & brown trout
DESCRIPTION: Straddling the Winneshiek-Allamakee County line north of Decorah, Pine Creek is a tributary to Canoe Creek and the Upper Iowa River Watershed and is noted for its naturally reproducing trout. This stream is for the serious angler in search of landing wild stream-reared brown and brook trout. Bushwhacking through willow thickets is often required to fish the narrowness of the five-foot-wide stream corridor that twists and turns along cleared farmland and forested timber. Besides the rush of catching a wild trout, this stream's setting is truly pictorial, with bluffs, oak-hickory woodlands, goat prairie and trickling trout water all nestled together within a deep-cut valley, which is a distinctive feature of the entire area. Much of this creek is contained within the 7,205-acre South Pine Creek Wildlife Management Area that begins just downstream of the County Road W60 bridge. Public land surrounding Pine Creek is also open to hunting, in case you feel the need to trade in your long fishing pole for long arms and take to the woods in search of grouse, squirrel or woodcock.

11. TWIN SPRINGS



LENGTH & TROUT: 0.5 mile stream with brook, brown & rainbow trout
DESCRIPTION: Twin Springs is a small cold water stream that flows through a county park and Pulpit Rock Campground before emptying into the Upper Iowa River. It is heavily fished because of the campground along its banks and frequent stocking schedule. Upstream you will encounter the old traces of an historic trout hatchery, a hiking trail, numerous picnic areas and fire pits. You will also find a children's trout fishing pond offering a safe and convenient location for young anglers to learn the basics. A youth trout fishing clinic is offered at the pond each year during the first weekend in June, which also happens to be free fishing weekend for Iowa residents.

2. COLDWATER CREEK



LENGTH & TROUT: 4.0 mile stream with brook, brown & rainbow trout
DESCRIPTION: Coldwater Creek has the most interesting headwaters of all the Iowa streams, as the creek's "source" begins at Coldwater Cave. Known as Iowa's longest and most spectacular cave with over 17 miles of passages documented, the stream begins from the base of a 100 foot-tall bluff located within the 232-acre Coldwater Creek Wildlife Management Area. To fishermen, Coldwater Creek is considered by many to be one of the better trout streams in the state due to its length and fish counts. Although some stream segments are surrounded by dense foliage, pasture and prairie surround the majority of this medium-sized creek that is known to be home to naturally reproducing rainbows. Coldwater Creek also features many runs between obvious deep pools, which makes it an ideal stream for bait fishermen and fly fishermen alike. The streambed offers enough room for anglers to get their offering to where it needs to be without much difficulty, due to the twists and turns of the creek. For a weekend getaway, nearby lodging options include Chimney Rock Campground and Randy's Bluffton Store & Campground.

8. SOUTH PINE CREEK



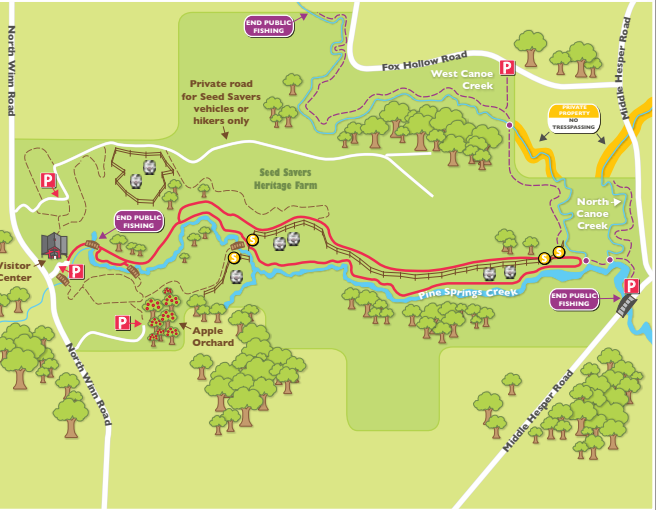
LENGTH & TROUT: 2.0 mile stream with brook trout
DESCRIPTION: There is only one stream in NE Iowa that maintains an undisturbed population of Iowa's only surviving native brook trout. These trout are genetically distinct from all others worldwide and many believe them to be decedents of fish that inhabited these waters in pioneer days and possibly survivors from the last Ice Age. If you are drawn to wild fish, South Pine Creek is a stream that will provide you with a truly irreplaceable experience. Though, it isn't an easy stream to find and the fishable portion of this stream is a little over a mile hike from the only parking access within the 217-acre South Pine Creek WMA. The walk itself is a pretty easy hike for the most part, but does feature steep gradient increases and decreases leading to the stream. Right at a mile from the parking access, the terrain opens up into a picturesque clearing with the main stem of South Pine Creek rests in a wide, grassy valley, seemingly untouched. If you are lucky enough to land one of these amazingly colored self-supporting wild brook, don't expect anything over a pound, but be ready for a fight. With that said, consider approaching South Pine Creek as a naturalist rather than an angler given this is truly one of NE Iowa's special resources.

12. WEST CANOE CREEK



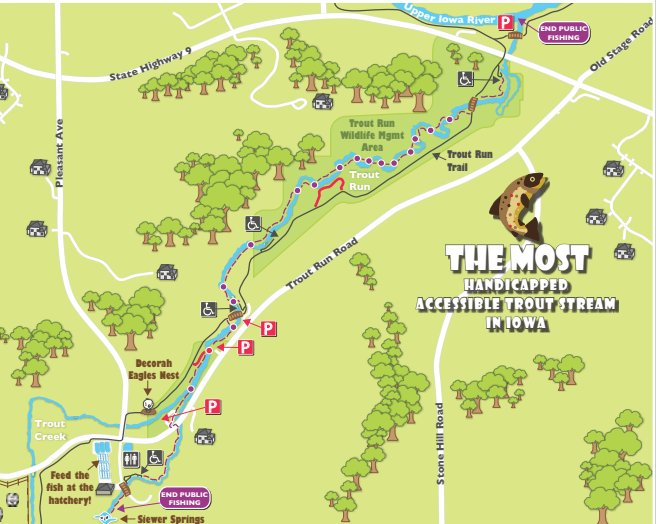
LENGTH & TROUT: 1.0 mile stream with rainbow trout
DESCRIPTION: One of three streams located northwest of Decorah, West Canoe Creek is an open and accessible pasture stream that winds through Troll Hollow Campground until public access ends at a large pool near the W34 bridge. Although this is a warm-water stream, don't hesitate to wet a line and check it out. Especially if you are new to fly fishing. This pasture stream offers beginners the ideal location to set up, relax and cast for rainbows. It is also a short drives distance from Pine Springs Creek and Randy's Bluffton Store & Campground as well as Hutchinson Family Farm & Campground, making it an ideal stream for a side trip.

3. PINE SPRINGS CREEK



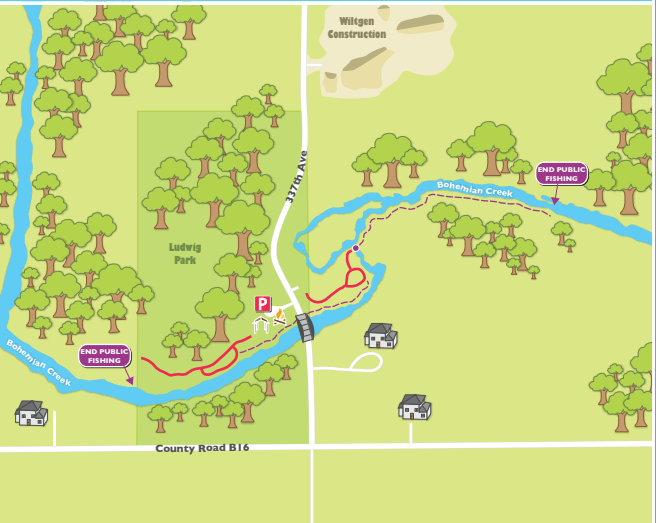
LENGTH & TROUT: 4.3 mile stream with brook & brown trout
DESCRIPTION: Located on the Seed Savers Exchange's (SSE) 890-acre organic Heritage Farm, Pine Spring Creek and portions of North Canoe and West Canoe creeks offer an idyllic setting for fishing both brook and brown trout. Visitors may keep brown trout, but SSE asks visitors to release brook trout, which have been the subject of ongoing preservation efforts since 2009. SSE has worked with the Iowa DNR, Natural Resources Conservation Service, Trout Unlimited and Hawkeye Fly Fishing Association to improve the habitat for brook trout in Pine Springs Creek by restoring the flow of the original stream bed and improving habitat for spawning. The brook trout, an indigenous species, has been reintroduced to Pine Spring Creek and was last stocked in 2004 from the South Pine Creek strain. Today, Pine Springs Creek is included in the Iowa DNR's List of Outstanding Iowa Waters for its water quality. While you enjoy Pine Spring Creek, the rest of the family can enjoy Heritage Farm's eight miles of trails, views of Ancient White Park cattle, a Historic Apple Orchard, picnic tables, a visitors' center and display gardens for children and adults.

9. TROUT RUN & FISH HATCHERY



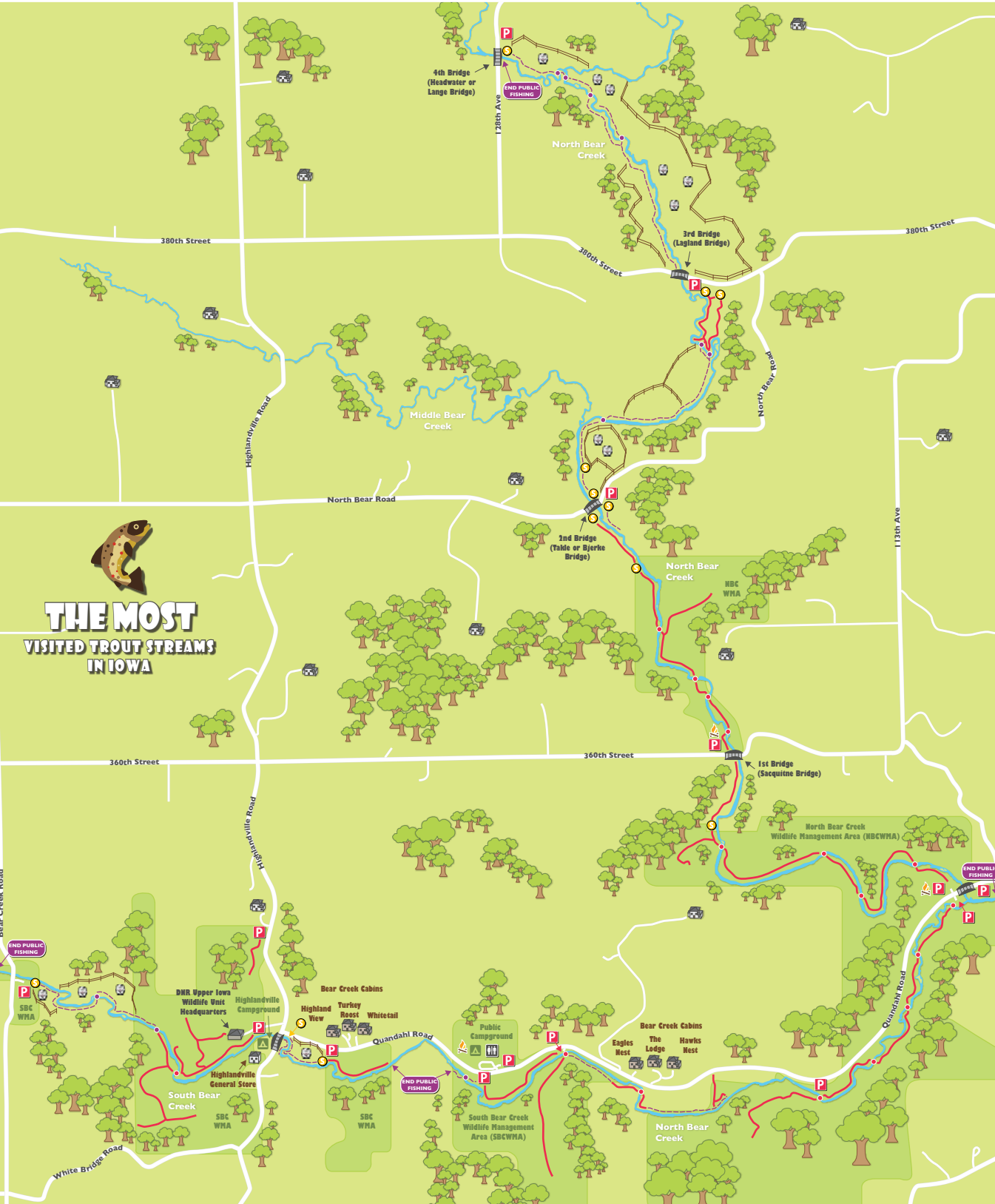
LENGTH & TROUT: 2.2 mile stream with brook, brown & rainbow trout
DESCRIPTION: Trout Run Creek follows both Trout Run Road and the Trout Run Trail just south of Decorah. The stream has excellent access with several parking areas, including parking at the Decorah Fish Hatchery where the catchable trout waters of the stream begins at the base of the waterfall fed by Iowa's second largest spring, Siewer Springs. Here, water surges out of a limestone outcropping at 3,000-5,000 gallons of water per minute, forming the Trout Run trout stream and providing the only water source for the Decorah Fish Hatchery. The hatchery welcomes visitors and a popular pastime during visits is to feed the trout being reared in the raceways. You can also view the famous "Decorah Eagles." The birds are frequent visitors to the hatchery and nearby stream, feasting on trout and small animals. Trout run is a fairly large stream by Driftless standards, perhaps 20-75 feet across, flowing 2.2 miles before joining the much larger Upper Iowa River at Trout Run Park. You can fish the entire length of this stream. Trout Run is known as the most handicapped accessible trout stream in Iowa and features five universal fishing access points. Much of this stream is located within the 106-acre Trout Run WMA.

13. BOHEMIAN CREEK



LENGTH & TROUT: 0.3 mile stream with brown & rainbow trout
DESCRIPTION: Located east of the hamlet of Protivin, Bohemian Creek is named for the Czech immigrants who settled here on the western edge of the Driftless Area in the nineteenth century. This tributary to the Turkey River is situated within the 20-acre Ludwig County Park that is accessible from parking near the pony truss bridge on 337th Ave. Although fishing access is somewhat limited since much of the stream runs through private property, Bohemian Creek features good shore fishing, a shelter and fire pit. This stream is also know to rear naturally reproducing rainbow trout.

4 & 5. NORTH BEAR & SOUTH BEAR CREEK



LENGTH & TROUT: 11.2 mile stream with brook, brown & rainbow trout
DESCRIPTION: Bear Creek is an 11.2-mile-long tributary of the Upper Iowa River, joining Waterloo Creek for a short distance before entering the Upper Iowa just east of where Highway 76 crosses the river in Allamakee County. Its branches, North Bear and South Bear are considered by many to be two of the top trout streams in all of Iowa. With more angler visits to these two streams than any other in the state, a trip here will guarantee you great water, willing browns and abundant fishing access since both are almost entirely under public ownership. Altering segments of pasture and bluff-lined woodlands are what you will experience while fishing the Bear system. Be prepared to outfit yourself properly with waders and the right equipment to navigate through the brush, stream crossings and close quarter casting conditions. South Bear Creek begins west of Highlandville township, which is also home to Bear Creek Cabins and the Highlandville General Store & Campground. If you need fishing gear or a snack, the General Store is a one-stop-shop for fishing tackle, bait, groceries, fishing & hunting licenses and the locals' favorite "Spring Grove Soda." One feature that makes South Bear Creek different from other nearby streams is the number of beaver dams. There are at least five past or present dams, which make for large pools that have been known to produce hefty browns. The eastern portion of South Bear is known to have a noticeable drop to it, which has resulted in zones of stream where riffles drop off into runs, pockets, pools and undercut banks that are easy to wade in and fish. South Bear is joined by North Bear along Quandal Road. North Bear is renowned for having one of the largest populations of wild brown trout in Iowa. From access along Quandal Road to the 2nd Bridge known as the "Tackle or Bjerke Bridge," you can expect to loop through woodland, while occasionally edging around limestone cliffs and cuts. Many consider this two-mile stretch to be one of the most scenic sections of the Bear system, and also a trout habitat hot spot with excellent numbers. Stream conditions from the "2nd Bridge" to the "4th Bridge known as the "Headwater or Lange Bridge," features a small, quiet section of water that will take you through a mixture of continuously-grazed pastures and lush green-spring grass. Typically, these two segments receive less pressure from anglers and would be ideal sections for you if you are new to the sport of fly fishing and are looking for an open pasture with good back cast room and water access.

TROUT FISHING GUIDE SERVICES

FLY FISHING GUIDE SERVICE

Kent Monte

Tight Lines Trout

Dave

DRIFTLESS on the Fly

Jared Ryan Amanda

Driftless Fishers, LLC

Liz

BEAR CREEK ANGLERS. Fly fishing guide service focused on introducing beginners to the sport of catch and release fly fishing or the novice who could use some helpful tips. Contact Kent Kleckner or Monte Bowden at 563-419-4433 or www.bearcreekanglers.com

TIGHT LINES TROUT GUIDE SERVICES. Specializing in the pursuit of trophy brown trout using spin and fly fishing gear. Full and half day trips available, gear and snack included. Contact Dave Strom at 563-419-7878 or email tghtlnstr@gmail.com.

DRIFTLESS ON THE FLY. Fly fishing guide service offering full and half day wade trips in the Iowa driftless region. Trips include rod/ree, flies, leader, tippet, lunch (full day). Contact Ryan (641) 330-9694 or Jared (641) 257-9025 or email info@driftlessonthefly.com or visit www.driftlessonthefly.com.

DRIFTLESS FISHERS, LLC. Providing guided trips for anglers of all skill levels to experience the excitement of fly fishing in beautiful Northeast Iowa. Casting instruction and equipment rentals also available. Contact Liz at driftlessfishers@gmail.com or visit www.driftlessfishers.com.

nei FLY FISHING. Full day and half day trips. Email Ethan at neilyfishing@gmail.com or visit www.neilyfishing.com

UP NORTH ADVENTURES. Contact Bob Timmerman at 563-535-7296 or snowdog@acegroup.cc

TROUT GUIDE ACKNOWLEDGEMENTS

This Trout Guide was sponsored in part by a grant from the Winneshiek County Community Foundation and funding from the Winneshiek County Conservation & Visitors Bureau. Design of the guide was completed by Northeast Iowa Resource Conservation & Development with input from the Decorah Fish Hatchery, Winneshiek County Conservation Board and Iowa Driftless Chapter of Trout Unlimited.

IOWA'S TROUT FAMILY

BROOK TROUT are native to Iowa and are recognized by two main characteristics: vivid white lines on the front or leading edge of the lower fins, and the top portion or back is covered with light wormy streaks or mottlings on a darker background called vermiculations.

BROWN TROUT are brown with silvery sides and obvious black spots outlined by orange coloration. They have a square tail, and a lower jaw that juts out ahead of their upper jaw. Males, during the breeding season, often exhibit vivid yellow to reddish-yellow colors along the belly region and a sharply hooked lower mandible.

RAINBOW TROUT are alive to greenish-blue over most of the upper body, fading to a silvery-white along the belly. They are most easily separated from the other trout species by the strikingly prominent pink-red horizontal stripe that extends down each side of the fish and the small black spots on the sides, back, dorsal and caudal fins.

TROUT STREAM MAP LEGEND
